



Enituice Enterprise Co., Ltd.

Spring Collets

Headstock Collets

Carbide Guide Bushes

Special Collets



Honesty
Professionalism
Quality



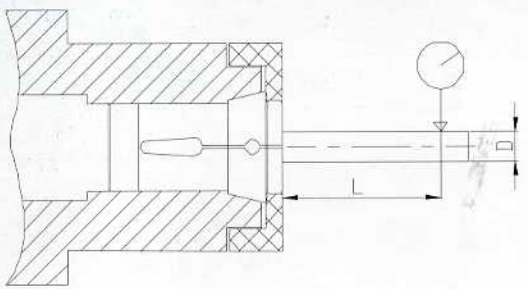
<http://www.enituice.com.tw>

ISO9001:2008

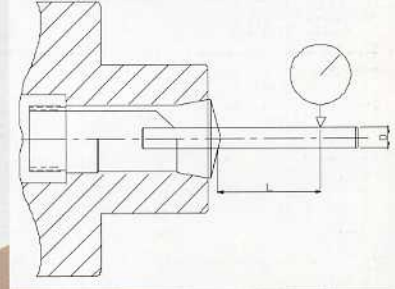


>> Running concentricity <<

Push Type Collets
This is similar to DIN 6343

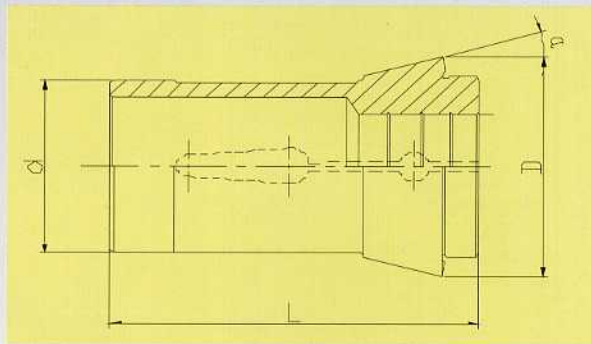


Draw-back Collets
This is similar to DIN 6341



clamping diameter		testing point	running concentricity	
D	L		standard	high
over	up to		m/m	precision
0.5	1	3	0.02	0.01
1	1.6	6	0.02	0.01
1.6	3	10	0.02	0.01
3	6	16	0.02	0.01
6	10	25	0.02	0.01
10	18	40	0.03	0.015
18	24	50	0.04	0.02
24	30	60	0.04	0.02
30	--	60	0.05	0.025

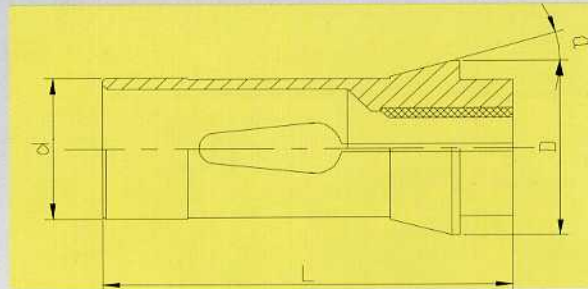
clamping diameter		testing point	running concentricity	
D	L		standard	high
over	up to		m/m	precision
1	1.6	6	0.02	0.01
1.6	3	10	0.02	0.01
3	6	16	0.02	0.01
6	10	25	0.02	0.01
10	18	40	0.03	0.015
18	24	50	0.04	0.02
24	30	60	0.04	0.02
30	--	60	0.05	0.025



>> Headstock Collets <<

Art-No	Type	Item No	d	L	D	Schau No	DIN No
140E	TRAUB A-15	1215	ø 22.0	55	ø 30.0	F22/71	DIN 6343-22
148E	TRAUB A-20	1220	ø 28.0	70	ø 38.0	F28/93	
161E	TRAUB A-25	1225	ø 32.0	75	ø 45.0	F32/221	DIN 6343-32
162E	INDEX 25#	1226	ø 35.0	70	ø 43.0	F35/67	
163E	INDEX 30#	1230	ø 35.0	80	ø 48.0	F35/94	DIN 6343-35
164E	LI CO 32#	1232	ø 38.1	108	ø 49.0	F38/72	
171E	INDEX 36#	1236	ø 42.0	94	ø 55.0	F42/99	DIN 6343-42
173E	INDEX 42#	1242	ø 48.0	94	ø 60.0	F48/81	DIN 6343-48
177E	INDEX 52#	1252	ø 58.0	94	ø 70.0		
185E	INDEX 60#	1261	ø 66.0	110	ø 84.0	F66/359	DIN 6343-60
193E	INDEX 80#	1280	ø 90.0	130	ø 107.0		
LI CO	65#	1265	ø 72.0	142	ø 89.0		
POLYGYM	38#	1238	ø 42.0	92	ø 51.0		
C-32	32#	1332	ø 40.0	104	ø 54.5		
C-44	42#	1342	ø 54.0	87	ø 68.0		
C-50	JCL-50	1350	ø 60.0	89	ø 72.0		
C-60	JCL-60	1360	ø 75.0	100	ø 93.0		
MIYNO	BNC34	1734	ø 44.4	108	ø 55.0		
MIYNO	25	1725	ø 40.0	95	ø 45.0		
RIKEN	SAD40	1742	ø 48.0	84	ø 66.0		





>> Headstock Collets for Lathes <<

Machines	Type	Carbide	Steel	d	L	D	Article No				
		Item No	Item No								
CITIZEN	P4,P7	3204	6204	ø 8.0	41	ø 12.0	F8/1079				
	R07,D/F/GL-10	3910	6910	ø 15.0	64	ø 21.0	F15/580	120E	TF15	40.003	
	B12 , F12	3212	6212	ø 16.0	64	ø 21.0					
	D/E/FL/M-16,E/FL/M-20	3720	6720	ø 25.0	77	ø 35.0	F25/64	145E	TF25	40.005	
	L16/20 , F16/20,M16 , G20 , E20	3216	6216	ø 26.0	67	ø 36.0					
	F25 , L25 , E25 , E25J	3225	6225	ø 30.0	78	ø 42.0					
	VNC32,E32,G32	3232	6232	ø 37.0	92	ø 47.0	F37/740	1536E	TF37	40.008	
STAR	SW7,SW10,JNC10,RNC10,SNC10	3910	6910	ø 15.0	64	ø 21.0	F15/580	120E	TF15	40.003	
	SE12 , S13 , VNC12 , SJ15	3512	6512	ø 18.0	64	ø 25.0					
	RNC16 , SE16 , SR16 , SH16	3516	6516	ø 20.0	67	ø 28.0	F20/87	138E	TF20	40.004	
	KNC16/20,SR20,VNC20	3720	6720	ø 25.0	77	ø 35.0	F25/64	145E	TF25	40.005	
	JNC16 , L16/20 , ZNC16 , VNC20	3216	6216	ø 26.0	67	ø 36.0					
	KJR25,SCN25	3725	6725	ø 30.0	80.3	ø 42.0	F30/63	157E	TF30	40.006	
	JNC32/25 , E32 , G32 , L32 , M32	3232	6232	ø 37.0	92	ø 47.0	F37/740	1536E	TF37	40.008	
TSUGAMI	T7 , BOO7 , BM07,NP-4W	3707	6707	ø 10.0	46	ø 16.0	F10/1178	111E		140.001	
	L10	3710	6710	ø 14.0	47	ø 20.0					
	NT/NP11	3910	6910	ø 15.0	64	ø 21.0	F15/580	120E	TF15	40.003	
	BO12,NT/NP-12	3616	6616	ø 20.0	67	ø 26.0					
	NP17 , NP16 , NT17	3717	6717	ø 23.8	62	ø 28.0	TF24		TF24	40.024	
	BO18A , S20 , BS18	3721	6721	ø 28.0	77	ø 35.0					
	BO18B , S20 , BS18	3720	6720	ø 25.0	77	ø 35.0	F25/64	145E	TF25	40.005	
	BS26A , BS25	3726	6726	ø 33.0	80.3	ø 40.0					
	BS26B , BS25	3725	6725	ø 30.0	80.3	ø 42.0	F30/63	157E	TF30	40.006	
	NT/NP-32	3232	6232	ø 37.0	92	ø 47.0	F37/740	1536E	TF37	40.008	
	BH38(SUB)	3739	6739	ø 48.0	100	ø 54.0					
BH38	3738	6738	ø 43.0	92	ø 53.0						
NOMURA	NSP8410 , NSP8420	3608	6608	ø 12.0	58	ø 18.0					
	NSP1053 , NN10K	3610	6610	ø 16.0	50.5	ø 22.0					
	NSP1653 , NSP1253	3616	6616	ø 20.0	68	ø 26.0					
	NN20KF	3216	6216	ø 26.0	67	ø 36.0					
	P-23	3623	6623	ø 29.0	72	ø 39.0					
	NNCP2553 , NN25K	3625	6625	ø 32.0	84.5	ø 42.0					

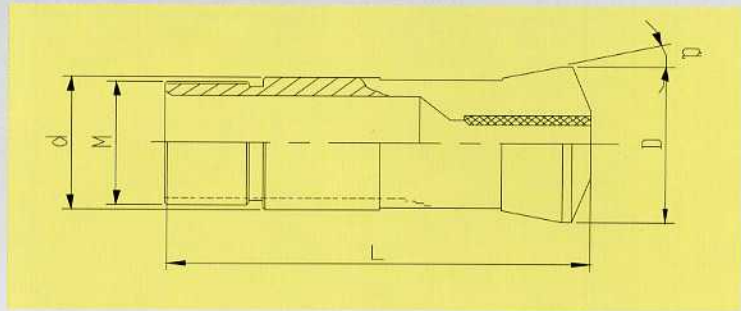


Machines	Type	Carbide	Steel	d	L	D	Article No			
		Item No	Item No							
TORNOS	M4,T4,TV	3904	6904	ø 8.0	42	ø 12.0	F8/577	101E	TF8	40.001
	M7	3907	6907	ø 10.0	47.5	ø 15.5	F10/86	109E	TF10	40.002
	MS7	3108	6108	ø 13.0	64	ø 19.0	F13/357	116E	TF13	40.016
	R10,M10	3910	6910	ø 15.0	64	ø 21.0	F15/580	120E	TF15	40.003
	R125	3912	6912	ø 16.0	64	ø 21.0	F16/1076	1212E	TF16	40.012
	R16,M15	3516	6516	ø 20.0	67	ø 28.0	F20/87	138E	TF20	40.004
	RR20,R20,M20	3720	6720	ø 25.0	77	ø 35.0	F25/64	145E	TF25	40.005
	M25	3725	6725	ø 30.0	80.3	ø 42.0	F30/63	157E	TF30	40.006
	MR32,TBM32	3232	6232	ø 37.0	92	ø 47.0	F37/740	1536E	TF37	40.008
TORNOS-DECO	DECO 2000-7	3907	6907	ø 10.0	47.5	ø 15.5	F10/86	109E	TF10	40.002
	DECO 2000-10	3910	6910	ø 15.0	64	ø 21.0	F15/580	120E	TF15	40.003
	DECO 2000-13/16	3912	6912	ø 16.0	64	ø 21.0	F16/1076	1212E	TF16	40.012
	DECO 2000-13/16	3816	6816	ø 20.0	54	ø 26.0	F20/201	136E	F20/201	225.003
	DECO 2000-20	3720	6720	ø 25.0	77	ø 35.0	F25/64	145E	TF25	40.005
	DECO 2000-26	3826	6826	ø 30.0	65	ø 38.0	F30/101		O161	90.009
	DECO 2000-32	3232	6232	ø 37.0	92	ø 47.0	F37/740	1536E	TF37	40.008
TRAUB	TNL 12/7	3910	6910	ø 15.0	64	ø 21.0	F15/580	120E	TF15	40.003
	TNL 12/7	3912	6912	ø 16.0	64	ø 21.0	F16/1076	1212E	TF16	40.012
	TNL 16	3816	6816	ø 20.0	54	ø 26.0	F20/201	136E	F20/201	225.003
	TNL 16	3516	6516	ø 20.0	67	ø 28.0	F20/87	138E	TF20	40.004
	TNL 16	3720	6720	ø 25.0	77	ø 35.0	F25/64	145E	TF25	40.005
POLYGYM	DIAMOND 12,12CS	3212	6212	ø 16.0	64	ø 21.0				
	DIAMOND 16,16CS	3616	6616	ø 20.0	68	ø 26.0				
	DIAMOND 20,20B,20CS,20CSB	2220	1220	ø 28.0	70	ø 38.0	F28/93	148E		231.004
	DIAMOND 25,25B,25CS,25CSB	2225	1225	ø 32.0	75	ø 45.0	F32/221	161E	F32/221	231.005
	DIAMOND 32,32B,32CS,32CSB	3232	6232	ø 37.0	92	ø 47.0	F37/740	1536E	TF37	40.008
	DIAMOND SY-42	2242	1242	ø 48.0	94	ø 60.0	F48/81	173E	TF48	231.009
HANWHA	HANEX11 , SL12	3910	6910	ø 15.0	64	ø 21.0	F15/580	120E	TF15	40.003
	HANEX17 , ML18-G	3215	1215	ø 22.0	55	ø 30.0	F22/71	140E		231.002
	HANEX20	3720	6720	ø 25.0	77	ø 35.0	F25/64	145E	TF25	40.005
	HANEX25	3725	6725	ø 30.0	80.3	ø 42.0	F30/63	157E	TF30	40.006
	SL-35	3435	6435	ø 40.0	92	ø 49.5				
STROHM	M75-M105	3907	6907	ø 10.0	47.5	ø 15.5	F10/86	109E	TF10	40.002
	M105/125	3910	6910	ø 15.0	64	ø 21.0	F15/580	120E	TF15	40.003
	M205/255	3720	6720	ø 25.0	77	ø 35.0	F25/64	145E	TF25	40.005
	M205/255	3725	6725	ø 30.0	80.3	ø 42.0	F30/63	157E	TF30	40.006
BECHLER	A4 , A7	3107	6107	ø 10.0	46	ø 16.0				
	A7 , A10 , AR10	3110	6110	ø 14.0	46	ø 18.0	F14/98	117E		140.002
	B12	3112	6112	ø 18.0	67	ø 25.0	F18/85	127E		140.003
	B16	3116	6116	ø 22.0	67	ø 28.0	F22/88	139E		140.004
	B20,BR20	3120	6120	ø 26.0	67	ø 32.0	F26/90	146E		140.005



Machines	Type	Carbide	Steel	d	L	D	Article No			
		Item No	Item No							
BECHLER ENC	ENC 74/75	3108	6108	ø 13.0	64	ø 19.0	F13/357	116E	TF13	40.016
	ENC 162/164	3816	6816	ø 20.0	54	ø 26.0	F20/201	136E	F20/201	225.003
	ENC 163/167	3720	6720	ø 25.0	77	ø 35.0	F25/64	145E	TF25	40.005
GAUTHIER	GM 12	3816	6816	ø 20.0	54	ø 26.0	F20/201	136E	F20/201	225.003
	GM 20	3720	6720	ø 25.0	77	ø 35.0	F25/64	145E	TF25	40.005
	GM 25	3725	6725	ø 30.0	80.3	ø 42.0	F30/63	157E	TF30	40.006
GILDEMEISTER	GLD 12	3516	6516	ø 20.0	67	ø 28.0	F20/87	138E	TF20	40.004
	GLD 16/20,GS20-L	3720	6720	ø 25.0	77	ø 35.0	F25/64	145E	TF25	40.005
	GLD 25L,GS25-L	2225	1225	ø 32.0	75	ø 45.0	F32/221	161E	F32/221	231.005
PETERMANN	P4,P7	3204	6204	ø 8.0	41	ø 12.0	F8/1079			90.002
	P7	3907	6907	ø 10.0	47.5	ø 15.5	F10/86	109E	TF10	40.002
	P7R	3010	6010	ø 15.0	47	ø 22.0	F15/358	121E		90.004
	10,10HSR	3011	6011	ø 16.0	55	ø 22.0	F16/104	123E		90.005
	P16	3016	6016	ø 22.0	66	ø 32.0	F22/727			90.007
MANURHIN	Swing 13,Traminer 13	3112	6112	ø 18.0	67	ø 25.0	F18/85	127E		140.003
	Twin 13,Decotum 16	3516	6516	ø 20.0	67	ø 28.0	F20/87	138E	TF20	40.004
	Traminer 16	3816	6816	ø 20.0	54	ø 26.0	F20/201	136E	F20/201	225.003
	KMX,Swing,Traminer,Twin 20	3720	6720	ø 25.0	77	ø 35.0	F25/64	145E	TF25	40.005
	KMX 26,Twin 20,Swing 20	2225	1225	ø 32.0	75	ø 45.0	F32/221	161E	F32/221	231.005
	Mirabel PM 32	2232	1232	ø 38.1	108	ø 49.0	F38/72	164E		285.002
MAIER	ML7	3907	6907	ø 10.0	47.5	ø 15.5	F10/86	109E	TF10	40.002
	ML12G,ML12S,ML125K II	3910	6910	ø 15.0	64	ø 21.0	F15/580	120E	TF15	40.003
	ML18S,ML18H,ML20D	3720	6720	ø 25.0	77	ø 35.0	F25/64	145E	TF25	40.005
	ML26S,ML26H	3725	6725	ø 30.0	80.3	ø 42.0	F30/63	157E		40.006
	ML26D	2225	1225	ø 32.0	75	ø 45.0	F32/221	161E	F32/221	231.005
	ML36	2236	1236	ø 42.0	94	ø 55.0	F42/99	171E		171E
NEXTURN (KNOWLEDGE)	SA-12	3912	6912	ø 16.0	64	ø 22.0	F16/1076	1212E	TF16	40.012
	SA-18,SA-20,SA-20e	3720	6720	ø 25.0	77	ø 35.0	F25/64	145E	TF25	40.005
	SA-26,SA-26e	2225	1225	ø 32.0	75	ø 45.0	F32/221	161E	F32/221	231.005
	SA-32	3232	6232	ø 37.0	92	ø 47.0	F37/740	1536E	TF37	40.008
HARDINGE	S20,ST220	3720	6720	ø 25.0	77	ø 35.0	F25/64	145E	TF25	40.005
	ST220	3720	6720	ø 25.0	77	ø 35.0	F25/64	145E	TF25	40.005
	ST225	3725	6725	ø 30.0	80.3	ø 42.0	F30/63	157E	TF30	40.006





>> Guide Bushes for Lathes <<

Machines	Type	Item No	d	L	D	Thread M	Article No		
CITIZEN	R04	5904	ø 9.0	44	ø 12.0	M8X0.75	3077E	1.001	TD4
	R07	5907	ø 11.0	52	ø 14.5	M10X0.75	3134E	3.001	SW7
	D10,E10,F10,L10	5910	ø 16.0	59	ø 20.5	M14X1.0	3260E	8.001	TD10
	B12 , F12,C12,A12	5212	ø 18.0	60	ø 22.0	M18X1.0	3319E	171.001	SD125R
	B20 , M20 , L20	5920	ø 28.0	82	ø 34.0	M25X1.0	3602E	22.001	TD25S
	L16/20,F16/F20,E20,WF6,206M	5216	ø 30.0	59	ø 35.0	M30X1.0		510.001	
	F25 , L25 , E25 , E25J	5725	ø 34.0	87.5	ø 41.0	M34X1.0	3733E	451.001	CD25
	VNC32,G32,E32	5232	ø 42.0	82	ø 48.0	M40X1.0		28.01	TD32
STAR	SW7	5907	ø 11.0	52	ø 14.5	M10X0.75	3134E	3.001	SW7
	JNC-10,RNC-10,SNC-10	5910	ø 16.0	59	ø 20.5	M14X1.0	3260E	8.001	TD10
	SE12 , VNC12 , SJ15,SNC15	5512	ø 21.0	58	ø 24.0	M18X1.0	3438E	450.001	SNC15
	SB16 , SR16	5616	ø 22.0	70.5	ø 26.0	M20X1.0		487.001	P1653D
	RNC16,SE16,SA16,VNC16,KNC16	5516	ø 22.0	68	ø 29.0	M22X1.0			
	SA-16 , SR-16	5916	ø 22.0	68	ø 29.0	M22X1.0	3455E	39.001	TD20R
	KNC16 , VNCSR20	5920	ø 28.0	82	ø 34.0	M25X1.0	3602E	22.001	TD25S
	JNC16 , L16/20 , ZNC16 , VNC20	5216	ø 30.0	59	ø 35.0	M30X1.0		510.001	
	SCN-25,KJR-25	5725	ø 34.0	87.5	ø 41.0	M34X1.0	3733E	451.001	CD25
	JNC32/25,VNC32/25,E32,SR32	5532	ø 42.0	82	ø 49.0	M40X1.0	3827E	28.001	TD32S





Machines	Type	Item No	d	L	D	Thread M	Article No		
TSUGAMI	NP-4W	5907	ø 11.0	52	ø 14.5	M10X0.75	3134E	3.001	SW7
	T7 , BOO7 , BM07	5707	ø 12.0	52	ø 15.8	M12X1.0	3149E	261.001	
	L10	5710	ø 15.0	54	ø 19.0	M14X1.0			
	NT-11,NP-11	5212	ø 18.0	60	ø 22.0	M18X1.0	3319E	171.001	SD125R
	BO12	5616	ø 22.0	70.5	ø 26.0	M20X1.0		487.001	P1653D
	NP-17 , NP-16 , NT-17	5717	ø 23.0	72	ø 28.0	M22X1.0		483.001	TSG20R
	NP-20,BS20 , BO18 , BS18	5720	ø 30.0	70	ø 36.0	M28X1.0		486.001	NN20KD
	BO20-CV	5721	ø 26.0	77	ø 29.0	M25X1.0			
	BA-26	5726	ø 33.0	70	ø 38.0	M30X1.0			
	BA-26L	5724	ø 32.0	70	ø 38.0	M30X1.0			
	S-25,BS-26	5725	ø 34.0	87.5	ø 41.0	M34X1.0	3733E	451.001	CD25
	NP-32	5532	ø 42.0	82	ø 49.0	M40X1.0	3827E	28.001	TD32S
	BH38	5738	ø 48.0	81	ø 54.0	M46X1.0			
NOMURA	NS-P8410 , NS-P8420	5608	ø 14.0	60.5	ø 20.0	M14X1.0		480.001	P853D
	NS-P1053,NN-10K,	5610	ø 16.0	63	ø 20.0	M14X1.0		481.001	P1053D
	NS-P1653,NS-P1253	5616	ø 22.0	70.5	ø 26.0	M20X1.0		487.001	P1653D
	NN-P20,NN-20KF	5620	ø 30.0	67.5	ø 35.0	M30X1.0			
	NNC-P2553 , NN-25K	5625	ø 36.0	89	ø 44.0	M36X1.0			
TORNOS	M4,T4,TV	5904	ø 9.0	44	ø 12.0	M8X0.75	3077E	1.001	TD4
	M7	5907	ø 11.0	52	ø 14.5	M10X0.75	3134E	3.001	SW7
	M7,MS7	5908	ø 13.0	68	ø 17.0	M13X1.0		45.001	CD25
	R10 , M10,R125,MS7	5910	ø 16.0	59	ø 20.5	M14X1.0	3260E	8.001	TD10
	R10 , M10,R125	5212	ø 18.0	60	ø 22.0	M18X1.0	3319E	171.001	SD125R
	M15,R16,RR20	5915	ø 22.0	68	ø 29.0	M19X1.0	3454E	13.001	TD20
	M15,R16,RR20	5916	ø 22.0	68	ø 29.0	M22X1.0	3455E	39.001	TD20R
	RR20,	5920	ø 28.0	82	ø 34.0	M25X1.0	3602E	22.001	TD25S
	M20,M25	5925	ø 36.0	74	ø 43.0	M27X1.0			
	M20,M25	5923	ø 32.0	70.5	ø 40.0	M32X1.0	3708E	282.001	TSD20
	MR32	5932	ø 44.0	87.5	ø 53.0	M40X1.0	3835E	27.001	
TORNOS-DECO	DECO 2000-7	5907	ø 11.0	52	ø 14.5	M10X0.75	3134E	3.001	SW7
	DECO 2000-10	5910	ø 16.0	59	ø 20.5	M14X1.0	3260E	8.001	TD10
	DECO 2000-13/16	5816	ø 24.0	61	ø 29.5	M24X1.0	3507E	61.002	201
	DECO 2000-20	5820	ø 28.0	81	ø 34.0	M25X1.0	3610E	18.001	TD25/167
	DECO 2000-26	5725	ø 34.0	87.5	ø 41.0	M34X1.0	3733E	451.001	CD25
	DECO 2000-32	5532	ø 42.0	82	ø 49.0	M40X1.0	3827E	28.001	TD32S





Machines	Type	Item No	d	L	D	Thread M	Article No		
TRAUB	TNL 12/7	5312	ø 18.0	60	ø 22.0	M16X1.0	3320E	166.001	SD125R16
	TNL 16	5916	ø 22.0	68	ø 29.0	M22X1.0	3455E	39.001	TD20R
	TNL 17	5920	ø 28.0	82	ø 34.0	M25X1.0	3602E	22.001	
	TNL 20	5820	ø 28.0	81	ø 34.0	M25X1.0	3610E	18.001	TD25/167
	TNL 26	5725	ø 34.0	87.5	ø 41.0	M34X1.0	3733E	451.001	CD25
POLYGYM	DIAMOND 12,12CS	5212	ø 18.0	60	ø 22.0	M18X1.0	3319E	171.001	SD125R
	DIAMOND 16,16CS	5616	ø 22.0	70.5	ø 26.0	M20X1.0		487.001	P1653D
	DIAMOND 20,20B,20CS,20CSB	5923	ø 32.0	70.5	ø 40.0	M32X1.0	3708E	282.001	TSD20
	DIAMOND 25,25B,25CS,25CSB	5725	ø 34.0	87.5	ø 41.0	M34X1.0	3733E	451.001	CD25
	DIAMOND 32,32B,32CS,32CSB	5532	ø 42.0	82	ø 49.0	M40X1.0	3827E	28.001	TD32S
	DIAMOND SY-42	5542	ø 50.0	82	ø 56.5	M49X1.0			
HANWHA	HANEX11 , SL12	5212	ø 18.0	60	ø 22.0	M18X1.0	3319E	171.001	SD125R
	HANEX17 , ML18-G	5916	ø 22.0	68	ø 29.0	M22X1.0	3455E	39.001	TD20R
	HANEX20	5920	ø 28.0	81	ø 34.0	M25X1.0	3602E	22.001	TD25S
	HANEX25	5725	ø 34.0	87.5	ø 41.0	M34X1.0	3733E	451.001	CD25
	SL-35	5435	ø 45.0	82	ø 52.0	M42X1.0			
STROHM	M75-M105	5907	ø 11.0	52	ø 14.5	M10X0.75	3134E	3.001	SW7
	M105/125	5312	ø 18.0	59	ø 22.0	M16X1.0	3320E	166.001	SD125R16
	M205/255	5915	ø 22.0	68	ø 29.0	M19X1.0	3454E	13.001	TD20
BECHLER	A4 , A7	5904	ø 9.0	44	ø 12.0	M8X0.75	3077E	1.001	TD4
	A7 , A10	5107	ø 12.0	52	ø 15.0	M12X1.0	3149E	261.001	
	A7 , A10 , AR10	5915	ø 22.0	68	ø 29.0	M19X1.0	3454E	13.001	TD20
	B12 , B16 , B20	5820	ø 28.0	81	ø 34.0	M25X1.0	3610E	18.001	TD25/167
BECHLER ENC	ENC 74/75	5910	ø 16.0	59	ø 20.5	M14X1.0	3260E	8.001	TD10
	ENC 162/164	5816	ø 24.0	61	ø 29.5	M24X1.0	3507E	61.002	201
	ENC 163/167	5820	ø 28.0	81	ø 34.0	M25X1.0	3610E	18.001	TD25/167
GAUTHIER	1hR	5907	ø 11.0	52	ø 14.5	M10X0.75	3134E	3.001	SW7
	GM 12	5910	ø 16.0	59	ø 20.5	M14X1.0	3260E	8.001	TD10
	GM 20	5915	ø 22.0	68	ø 29.0	M19X1.0	3454E	13.001	TD20
GILDEMEISTER	GLD 12	5312	ø 18.0	60	ø 22.0	M16X1.0	3320E	166.001	SD125R16
	GLD 16/20,GS20-L	5820	ø 28.0	81	ø 34.0	M25X1.0	3610E	18.001	TD25/167
	GLD 25L,GS25-L	5725	ø 34.0	87.5	ø 41.0	M34X1.0	3733E	451.001	CD25
PETERMANN	P4,P7	5904	ø 9.0	44	ø 12.0	M8X0.75	3077E	1.001	TD4
	P7R,10,10HS	5910	ø 16.0	59	ø 20.5	M14X1.0	3260E	8.001	TD10
	P16	5816	ø 24.0	61	ø 29.5	M24X1.0	3507E	61.002	201

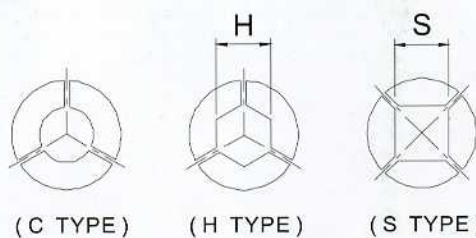
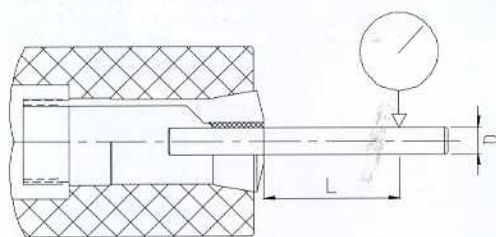




Machines	Type	Item No	d	L	D	Thread M	Article No		
MANURHIN	Swing 13,Traminer 13	5312	ø 18.0	60	ø 22.0	M16X1.0	3320E	166.001	SD125R16
	Twin 13,Decotum 16	5916	ø 22.0	68	ø 29.0	M22X1.0	3455E	39.001	TD20R
	Traminer 16	5915	ø 22.0	68	ø 29.0	M19X1.0	3454E	13.001	TD20
	KMX,Swing,Traminer,Twin 20	5820	ø 28.0	81	ø 34.0	M25X1.0	3610E	18.001	TD25/167
	KMX 26	5725	ø 34.0	87.5	ø 41.0	M34X1.0	3733E	451.001	CD25
	Mirabel PM 32	5532	ø 42.0	82	ø 49.0	M40X1.0	3827E	28.001	TD32S
MAIER	ML7	5907	ø 11.0	52	ø 14.5	M10X0.75	3134E	3.001	SW7
	ML12G,ML12S,ML125K II	5312	ø 18.0	60	ø 22.0	M16X1.0	3320E	166.001	SD125R16
	ML18S,ML18H,ML20D	5916	ø 22.0	68	ø 29.0	M22X1.0	3455E	39.001	TD20R
	ML20	5920	ø 28.0	82	ø 34.0	M25X1.0	3602E	22.001	TD25S
	ML26S,ML26H,ML26D	5725	ø 34.0	87.5	ø 41.0	M34X1.0	3733E	451.001	CD25
	ML32	5532	ø 42.0	82	ø 49.0	M40X1.0	3827E	28.001	TD32S
NEXTURN (KNOWLEDGE)	SA-12	5312	ø 18.0	60	ø 22.0	M16X1.0	3320E	166.001	SD125R16
	SA-12	5212	ø 18.0	60	ø 22.0	M18X1.0	3319E	171.001	SD125R
	SA-18,SA-20,SA-20e	5920	ø 28.0	82	ø 34.0	M25X1.0	3602E	22.001	TD25S
	SA-26,SA-26e	5725	ø 34.0	87.5	ø 41.0	M34X1.0	3733E	451.001	CD25
	SA-32	5532	ø 42.0	82	ø 49.0	M40X1.0	3827E	28.001	TD32S
HARDINGE	S20,ST220	5720	ø 30.0	70	ø 36.0	M28X1.0		486.001	NN20KD
	ST220	5920	ø 28.0	82	ø 34.0	M25X1.0	3602E	22.001	TD25S
	ST25,ST225	5725	ø 34.0	87.5	ø 41.0	M34X1.0	3733E	451.001	CD25

>> Running concentricity <<

This is similar to JIS Carbide Guide Bush and Collet Chuck

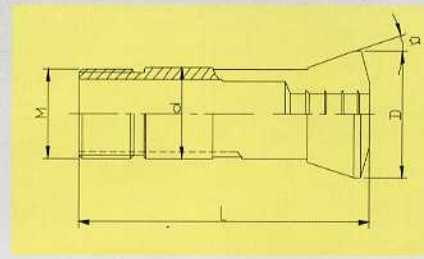


Circular Type

circular diameter		testing point	running concentricity	
D		L	standard	high
over	up to		m/m	precision
0.7	1	3	0.01	0.006
1	1.6	6	0.01	0.005
1.6	3	10	0.01	0.005
3	6	16	0.01	0.005
6	10	25	0.01	0.005
10	18	40	0.015	0.008
18	24	50	0.015	0.008
24	30	60	--	0.008
30	--	60	--	--

Hexagon or Square Type

H or S		testing point	running concentricity	
D		L	standard	high
over	up to		m/m	precision
1	3	10	--	0.03
3	6	16	0.07	0.03
6	10	25	0.1	0.03
10	18	40	0.1	0.03
18	24	50	--	0.03
24	35	60	--	0.03



>> Headstock Collets <<

Machines	Type	Steel	Carbide	d	L	D	Thread M
		Item No	Item No				
EUGVO	6#	1015	2015	ø 19.0	76	ø 26.0	18.5X1.2
	8#	1020	2020	ø 25.0	102	ø 33.0	24X1.5
YB	25#	1025	2025	ø 32.0	104	ø 39.0	31.5X20f"
	32#	1032	2032	ø 39.0	119	ø 49.0	38X18f"
	42#	1042	2042	ø 52.0	137	ø 64.0	50X16f"
FUJI	0825#	1112	2112	ø 16.0	72.5	ø 24.0	15X0.85
	1820#	1120	2120	ø 28.0	100	ø 36.0	25X1.5
	1825#	1125	2125	ø 35.0	124	ø 49.0	33X1.5
	1832#	1132	2132	ø 43.0	137	ø 57.5	40X1.75
DAIWA	10#	1410	2410	ø 15.0	60	ø 20.0	15X1.0
	102#	1412	2412	ø 17.0	69	ø 24.0	17X1.0
	15#	1415	2415	ø 22.0	85	ø 28.0	21X1.0
KITAMURA	XKNC-15FA	1515	2515	ø 19.05	76	ø 26.0	18.5X1.25
	XKNC-20FA	1520	2520	ø 26.0	92	ø 34.0	25X1.25
5C	USA	1705	2705	ø 31.75	88	ø 37.3	31.3X20f"
16C	USA	1716	2716	ø 48.0	117	ø 57.4	48X1.75
20C	USA	1720	2720	ø 60.4	163	ø 73.0	60X1.5
R8	USA	1708	2708	ø 24.0	105	ø 32.4	19X1.5
MAZAK	42#	1842	2842	ø 55.0	110	ø 66.0	50X1.5
CITIZEN	BL20/25	1820	2820	ø 33.0	100	ø 41.0	32X1.5
WACHIGAL	WPL-17 ✓	1517	2517	ø 23.0	97	ø 32.0	22X1.5
TSUGAMI	BM-16	1616	2616	ø 30.0	75	ø 38.0	25X1.5
STAR	SC-20	1920	2920	ø 30.0	79	ø 38.0	26X1.5
Wang Tzyy	20#	1320	2320	ø 28.0	82	ø 38.0	24X20f"
SD-25#	25#	1525	2525	ø 34.0	84	ø 41.5	29X20f"
SD-32#	32#	1532	2532	ø 42.0	95	ø 49.0	38X20f"
SD-45#	45#	1545	2545	ø 56.0	120	ø 68.0	51X20f"
SD-52#	52#	1552	2552	ø 61.0	120	ø 68.0	56X20f"
3718E	INDEX Germany	1718	2718	ø 32.0	124	ø 45.0	32X1.5
W-20	SCHAUBLIN	1620	2620	ø 20.0	73	ø 26.3	19.7X1.666
W-25	SCHAUBLIN	1625	2625	ø 25.0	112	ø 33.7	24.7X15"
L-20	SCHAUBLIN	1613	2623	ø 20.0	122	ø 28.0	19.7X2.0
B46	SCHAUBLIN	1246	2246	ø 46.0	120	ø 60.3	40X1.5L
K23	359E	1923	2923	ø 23.0	94	ø 32.0	Tr23X1.5
K32	386E	1932	2932	ø 32.0	114	ø 45.0	Tr32X1.5
K45	389E	1945	2945	ø 45.0	145	ø 60.0	Tr45x2.0



Enituice Enterprise Co., Ltd.



Worldwide Service

Enituice Enterprise Co., Ltd is a professional manufacturer of Spring Collets, Headstock Collets and Carbide Guide Bushes.

With our extensive manufacturing experience, technological expertise, superior research and development (R&D) skills, our collets and guide bushes can meet any and all industrial standards requirements. The high quality of our steel, specialized heat treatment process, high precision grinding machining, and strict quality control have made our products highly sought after all over the world.

The four main principles of our company are Honesty, Professionalism, Quality, and Stability. By following these main principles, we can supply precision products at competitive prices for your company.

We welcome your inquiries and hope to be of service in the future.



Headstock Collets



Headstock Collets



Headstock Collets



Carbide Guide Bushes



Special Collets

<http://www.enituice.com.tw> E-mail: eni.tuice@msa.hinet.net
Tel: +886-3-3564957(Rep.) Fax: +886-3-3574795/ +886-3-3575519
Add: No.2,Lane22, Yen-Wu Rd., Taoyuan City, Taiwan