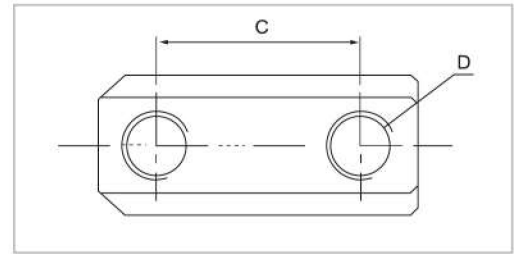
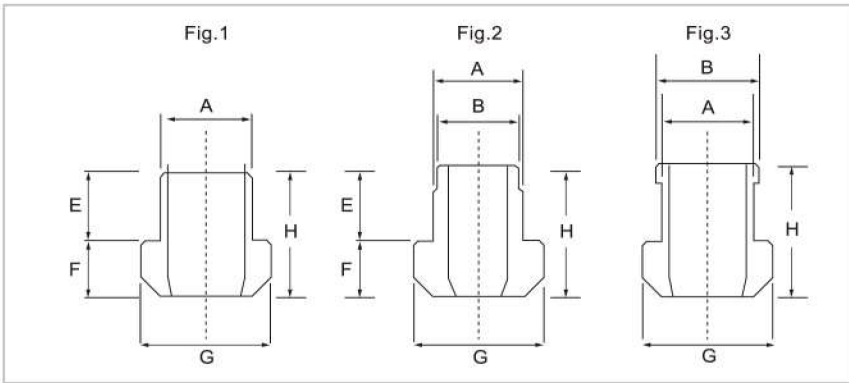
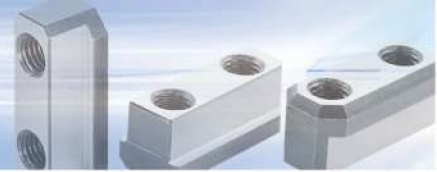


JAW T-NUTS



- To suit power chucks.
- We also have varied sizes of t-nuts.
- Jaw Nuts could be designed according to the brand of power chucks.

FEATURE

- To connect power chuck and soft jaws, to suit different brands.
- We categorize the T-Nuts into
 - Standard type (fig.1) 6"Soft Jaws are used for 8"chuck, 8"Soft Jaws are used for 10"chuck
 - Special type (fig.2) 10"Soft Jaws are used for 12"chuck, 12"Soft Jaws are used for 15"chuck
 - Special type (fig.3) 10"Soft Jaws are used for 8"chuck,

DIMENSIONS

UNIT: mm

Fig.1



Standard T-Nuts To suit Kitagawa B-type

DIMENSION ORDER NUMBER	Chuck Size	A	C	D	E	F	G	H	To suit Kitagawa	Reference Drawing
TB06	6"	12	20	M10	15	7.5	17.5	22.5	B-06	Fig. 1
TB08	8"	14	25	M12	16	9.5	20.5	25.5	B-08	Fig. 1
TB10	10"	16	30	M12	16	9.5	22.5	25.5	B-10	Fig. 1
TB12	12"	18	30	M14	20	13.5	26.5	33.5	B-12	Fig. 1

Fig.2



Standard T-Nuts To suit Kitagawa B-200 type

DIMENSION ORDER NUMBER	Chuck Size	A	B	C	D	E	F	G	H	To suit Kitagawa	Reference Drawing
T05	5"	10	--	14	M8	9.5	5.5	14.5	15	B-205	Fig. 1
T06	6"	12	--	20	M10	11	7.5	17.5	18.5	B-206	Fig. 1
T08	8"	14	--	25	M12	12	8.5	20.5	20.5	B-208	Fig. 1
T10	10"	16	--	30	M12	13	8.5	22.5	21.5	B-210	Fig. 1
T12	12"	21	--	30	M16	16.25	11.5	29.5	27.8	B-212	Fig. 1
T15	15"	24	22	43	M20	29	16.5	33.5	45.5	B-15	Fig. 2

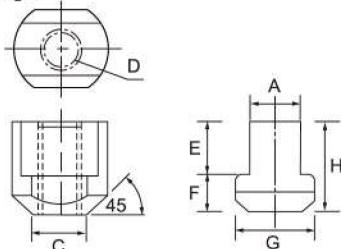
Fig.3



Special T-Nuts To suit Kitagawa B-200 type Such as: 6" soft jaw suitable for 8" chuck (6" to 8")

DIMENSION ORDER NUMBER	Chuck Size	Suitable to	A	B	C	D	H	Reference Drawing
TS08-06	6"	8" to 6"	12	14	25	M10	18.5	Fig. 3
TS06-08	8"	6" to 8"	14	12	20	M10	20.5	Fig. 2
TS10-08	8"	10" to 8"	14	16	30	M12	20.5	Fig. 3
TS08-10	10"	8" to 10"	16	14	25	M12	21.5	Fig. 2
TS10-12	12"	10" to 12"	21	16	30	M12	28	Fig. 2
TS12-15	15"	12" to 15"	24	21	30	M16	45.5	Fig. 2

Fig.4



Standard T-Nuts

DIMENSION ORDER NUMBER	Chuck Size	A	C	D	E	F	G	H	To suit Kitagawa	Reference Drawing
TB15	15"	25.5	26	M20	20.25	19	35	39.25	N-15	Fig.4
T21	21"	25	27	M20	26	19	37.5	45	B-21	Fig.4

Material: SCM440